

QUICK START GUIDE

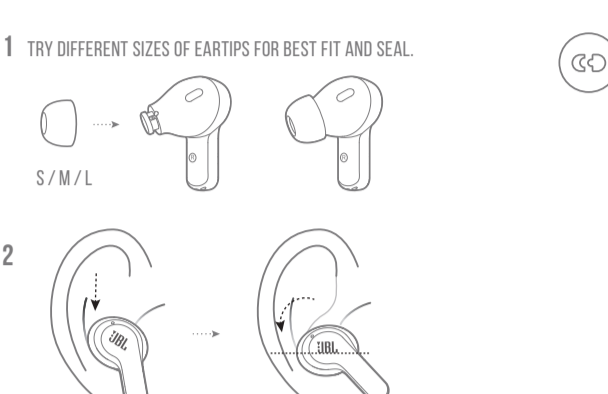
WAVE200 TWS



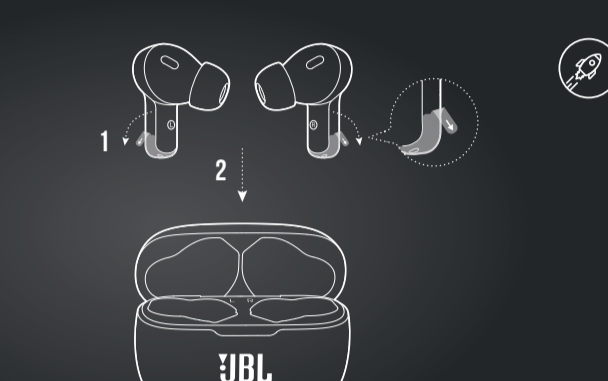
WHAT'S IN THE BOX



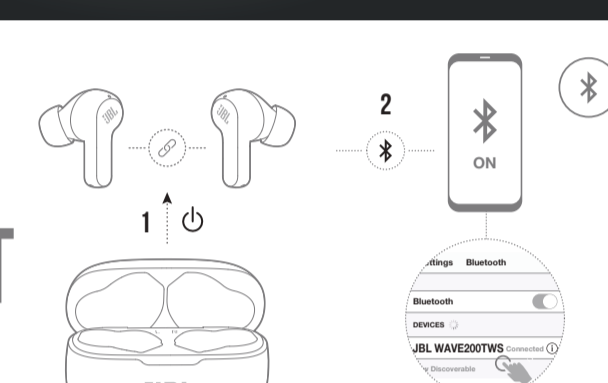
HOW TO WEAR



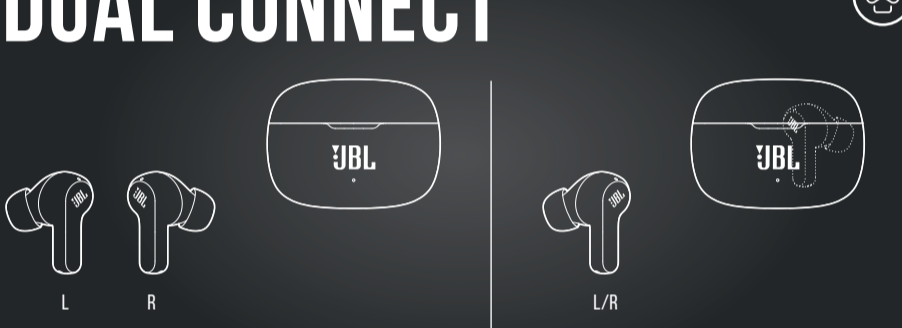
FIRST TIME USE



POWER ON & CONNECT



DUAL CONNECT



BUTTON COMMAND



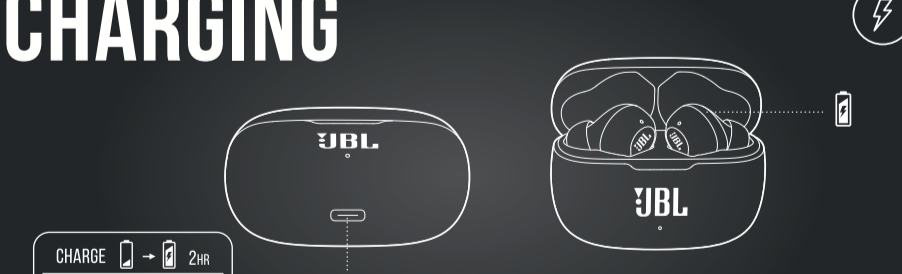
POWER OFF



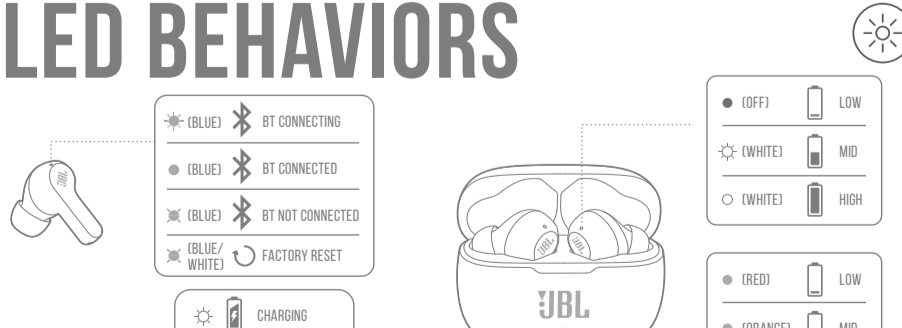
MANUAL CONTROLS



CHARGING



LED BEHAVIORS



TECH SPEC

Model:	WAVE200TWS
Driver size:	8 mm / 0.315" Dynamic Driver
Power supply:	5 V --- 1 A
Weight:	47.5 g / 0.105 lbs
Headset battery type:	Lithium-ion Battery (48 mAh / 3.7 V)
Charging case battery type:	Lithium-ion Battery (500 mAh / 3.7 V)
Charging time:	2 hrs from empty up to 5 hrs
Music playtime with BT on:	up to 20 hrs
Frequency response:	20 Hz - 20 kHz
Impedance:	16 ohm
Sensitivity:	108 dB SPL @ 1 kHz
Maximum SPL:	93 dB
Microphone sensitivity:	-38 dBV/Pa @ 1 kHz
Bluetooth version:	5.0
Bluetooth profile version:	A2DP V1.3, AVRCP V1.6, HFP V1.7
Bluetooth transmitter frequency range:	2.400 GHz - 2.4835 GHz
Bluetooth transmitter power:	12 dBm
Bluetooth transmitter modulation:	GFSK, π/4 QPSK, 8DPSK
Maximum operation temperature:	45°C

