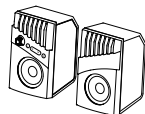


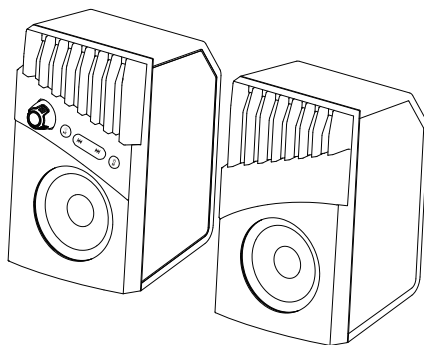
## PACKAGE CONTENTS:



Speaker ×2pcs

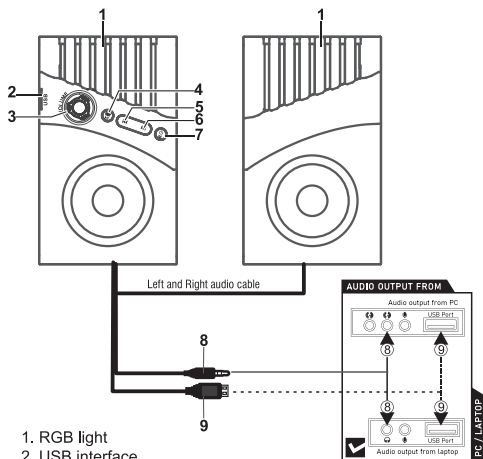


User Manual ×1pc



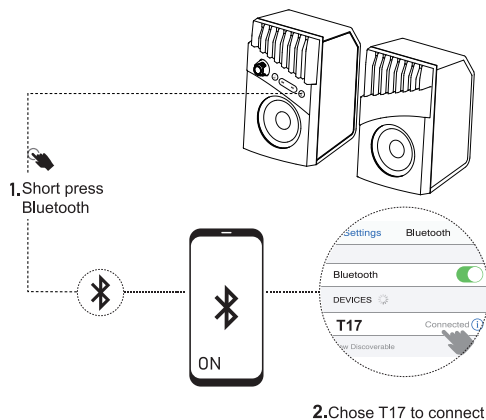
## USER MANUAL T17

### BUTTON COMMAND:



1. RGB light
2. USB interface
3. Main volume adjustment
4. Light & Play/Pause adjustment
  - Short press RGB light mode change
  - Long press to play/pause
5. Previous song
6. Next song
7. Power & mode switching
  - Long press on/off
  - Short press AUX/Bluetooth
8. 3.5mm audio input
9. USB 5V power input

### BLUETOOTH MODE:



1. Short press Bluetooth
2. Chose T17 to connect
3. Once the T17 pairs successfully with the device, it will connect automatically when available. To disconnect/forget a connection, it may be done from the bluetooth menu of your device.
4. Insert AUX in cable into your device, then briefly press the mode key to change to aux mode.

**Note:** If the audio cable is connected to the computer or the mobile phone has current noise, please turn the audio cable head to adjust until there is no current noise.