

English Quick Installation Guide (This manual applies to S16)

Images herein are for references only.

Product Overview

Ports	Power Input	LED	Status	Description
LEDs	Power	On	On	Power supply is provided to the device properly.
			Off	Power supply is not provided to the device properly.
			Solid	Indicates the corresponding port is connected.
Port 1-16	Off	Blinking	Off	Indicates no connection is established.
			Blinking	Indicates the corresponding port is connected and transferring data.

Connect S16 to the Internet

For wall-mounting: Bottom of the device. Power socket. Internet. Router. PC. IP Camera. Printer.

Support

SHENZHEN TENDA TECHNOLOGY CO., LTD
Address: 8/F Floor, Tower E3, No.1001, Zhongguanyuan Road, Nanshan District, Shenzhen, China, 518052
Technical Support: support@tenda.com.cn
Skype: tendazh
Telephone: (86 755) 2765 7180

E-mail: sales@tenda.com.cn
Website: http://www.tenda.com
Skype: tendazh
YouTube: Tendazh1999

Português

Visão Geral do Produto

Portas	Entrada de energia	LED	Estado	Descrição
LEDs	Energia	Liger	Liger	Fonte de alimentação é fornecida para o dispositivo corretamente.
			Desligado	Fonte de alimentação não está prevista o dispositivo corretamente.
			Sólido	Indica que o porte correspondente está ligado.
Porte 1-16	Desligado	Piscando	Desligado	Indica que não há conexão é estabelecida.
			Piscando	Indica que o porte correspondente está ligado e a transferência de dados.

Conecte S16 à Internet

Para montagem na parede: Parte inferior do dispositivo. Tomada de alimentação. Internet. Roteador. PC. Câmera IP. Impressora.

Apoyos

SHENZHEN TENDA TECHNOLOGY CO., LTD
Address: 8/F Floor, Tower E3, No.1001, Zhongguanyuan Rd., Nanshan District, Shenzhen, China, 518052
Technical Support: support@tenda.com.cn
Skype: tendazh
Telephone: (86 755) 2765 7180

E-mail: sales@tenda.com.cn
Website: http://www.tenda.com
Skype: tendazh
YouTube: Tendazh1999

Español

Descripción del producto

Entrada de energía	LED	Estado	Descripción	
Puentes	Encendido	Energía	Encendido	La fuente de alimentación se proporciona para el dispositivo adecuado.
			Apagado	La fuente de alimentación no se proporciona para el dispositivo adecuado.
			Sólido	Indica que el puerto correspondiente está conectado.
Puerto 1-16	Apagado	Parpadeo	Apagado	Indica que se ha establecido ninguna conexión.
			Parpadeo	Indica que el puerto correspondiente está conectado y transfiriendo los datos.

Conectar S16 a Internet

Para Montaje mural: Toma de corriente. Internet. Router. PC. Cámara IP. Impresora.

Apoyos

SHENZHEN TENDA TECHNOLOGY CO., LTD
Address: 8/F Floor, Tower E3, No.1001, Zhongguanyuan Rd., Nanshan District, Shenzhen, China, 518052
Technical Support: support@tenda.com.cn
Skype: tendazh
Telephone: (86 755) 2765 7180

E-mail: sales@tenda.com.cn
Website: http://www.tenda.com
Skype: tendazh
YouTube: Tendazh1999

Italiano

Panoramica del prodotto

Porte	Ingresso dell'alimentazione	LED	Stato	Descrizione
LED	Alimentazione	Acceso	Acceso	L'alimentazione per il dispositivo è fornita correttamente.
			Spento	L'alimentazione per il dispositivo non è fornita correttamente.
			Sólido	Indica che la porta corrispondente è collegata.
Porta 1-16	Spento	Lampoglia	Spento	Indica che nessuna connessione è stabilita.
			Lampoglia	Indica che la porta corrispondente è collegata e sta trasferendo dati.

Collegare S16 a Internet

Per il montaggio a parete: Fondo del dispositivo. Presa di alimentazione. Internet. Router. PC. Telecamera IP. stampante.

Supporto

SHENZHEN TENDA TECHNOLOGY CO., LTD
Address: 8/F Floor, Tower E3, No.1001, Zhongguanyuan Road, Nanshan District, Shenzhen, China, 518052
Technical Support: support@tenda.com.cn
Skype: tendazh
Telephone: (86 755) 2765 7180

E-mail: sales@tenda.com.cn
Website: http://www.tenda.com
Skype: tendazh
YouTube: Tendazh1999

Deutsch

Produktübersicht

Porte	Stromversorgung	LED	Stand	Beschreibung
LED	Power	Ein	Ein	Stromversorgung funktioniert einwandfrei.
			Aus	Stromversorgung funktioniert nicht einwandfrei.
			Stabil	Idie entsprechende Port ist angeschossen.
Anschlüsse 1-16	Aus	Blinkt	Aus	Keine Verbindung.
			Blinkt	Die entsprechende Port ist angeschossen und überträgt Daten.

Verbindet S16 mit dem Internet

Für Wandmontage: Unterseite des Geräts. Netzanschluss. Internet. Router. PC. IP-Kamera. Drucker.

Unterstützung

SHENZHEN TENDA TECHNOLOGY CO., LTD
Address: 8/F Floor, Tower E3, No.1001, Zhongguanyuan Road, Nanshan District, Shenzhen, China, 518052
Technical Support: support@tenda.com.cn
Skype: tendazh
Telephone: (86 755) 2765 7180

E-mail: sales@tenda.com.cn
Website: http://www.tenda.com
Skype: tendazh
YouTube: Tendazh1999

Français

Présentation du produit

Portes	Puissance d'entrée	LED	Etat	Description
LEDs	Alimentation	Allumée	Allumée	L'alimentation est bien fournie pour le dispositif.
			Eteint	L'alimentation n'est pas encore fournie pour le dispositif.
			Sólido	Indique que le port correspondant est bien connecté.
Port 1-16	Eteint	Clignotant	Eteint	Indique que aucune connexion n'est établie.
			Clignotant	Indique que le port correspondant est connecté et en train de transmettre les données.

Connecter S16 avec l'Internet

Pour l'installation murale: Bouton d'appareil. Prise d'alimentation. Internet. Routeur. PC. Camera IP. Impriméur.

Support

SHENZHEN TENDA TECHNOLOGY CO., LTD
Address: 8/F Floor, Tower E3, No.1001, Rue Zhongguanyuan, Anandassanin Nanshan, Shenzhen, China, 518052
Support technique: support@tenda.com.cn
Skype: tendazh
Telephone: (86 755) 2765 7180

Courrier électronique: sales@tenda.com.cn
Site d'Internet: http://www.tenda.com
Skype: tendazh
YouTube: Tendazh1999

正面

反面

Polski Quick Installation Guide (This manual applies to S16/S24)

Images herein are for references only.

Przegląd produktów

Port	Zasilanie	LED	Status	Opis
Diody LED	Włączac	Moc	Włączac	Zasilanie jest normalne.
			Wyłącz	Zasilanie nie jest normalne.
			Staly	Wskazuje, że port połączenia.
Porty 1-16	Wyłącz	Migotanie	Wyłącz	Wskazuje na brak połączenia.
			Migotanie	Wskazuje, że port połączenia i transferu danych.

Połączenie S16 z Internetem

Do montażu na ścianie: Oniżado zasilania. Internet. Router. PC. Kamera IP. Drukarka.

Wsparcie

SHENZHEN TENDA TECHNOLOGY CO., LTD
Address: 8/F Floor, Tower E3, No.1001, Zhongguanyuan Road, Nanshan District, Shenzhen, China, 518052
Technical Support: support@tenda.com.cn
Skype: tendazh
Telephone: (86 755) 2765 7180

E-mail: sales@tenda.com.cn
Website: http://www.tenda.com
Skype: tendazh
YouTube: Tendazh1999

Magyar

Termék áttekintés

Portok	Felvett teljesítmény	LED	Status	Leírás
LED-es lámpák	Bekapcsol	Tápellátás	Bekapcsol	Tápellátás normális.
			Leállt	Tápellátás nem normális.
			Szállt	Jelzi, hogy az adott port csatlakozott.
Portok 1-16	Leállt	Vibrálás	Leállt	Jelzi, hogy a kapcsolat nem jött létre.
			Vibrálás	Jelzi, hogy az adott port csatlakoztatva van és adatátvitel folyik.

S16 csatlakozása az internethez

Falra szerelhető: Hálózati csatlakozó aljzat. A készülék alján. Internet. Router. PC. IP Kamera. Nyomtató.

Támogatás

SHENZHEN TENDA TECHNOLOGY CO., LTD
Address: 8/F Floor, Tower E3, No.1001, Zhongguanyuan Road, Nanshan District, Shenzhen, China, 518052
Technical Support: support@tenda.com.cn
Skype: tendazh
Telephone: (86 755) 2765 7180

E-mail: sales@tenda.com.cn
Website: http://www.tenda.com
Skype: tendazh
YouTube: Tendazh1999

Русский

Краткая информация о продукте

Порты	Вход питания	Светодиоды	Состояние	Описание
Светодиоды	Включен питание	Питание	Вкл.	Электроснабжение подается на устройство в нормальном режиме.
			Выкл.	Электроснабжение не подается на устройство в нормальном режиме.
			Нормально	Указывает на подключение соответствующего порта.
Порт 1-16	Выкл.	Мигание	Выкл.	Указывает на отсутствие подключения.
			Мигание	Указывает на подключение соответствующего порта и передачу информации.

Подключение S16 к интернету

Для настенного монтажа: Розетка электропитания. Нижняя часть устройства. Интернет. Маршрутизатор. ПК. IP-камера. Принтер.

Поддержка

SHENZHEN TENDA TECHNOLOGY CO., LTD
Address: 8/F Floor, Tower E3, No.1001, Zhongguanyuan Road, Nanshan District, Shenzhen, China, 518052
Technical Support: support@tenda.com.cn
Skype: tendazh
Telephone: (86 755) 2765 7180

E-mail: sales@tenda.com.cn
Website: http://www.tenda.com
Skype: tendazh
YouTube: Tendazh1999

Română

Prezentarea produsului

Porturi	Putea de intrare	LED	Stare	Descriere
LED-uri	Putere	Pornire	Pornire	Dispozitivul este alimentat corect.
			Oprire	Dispozitivul nu este alimentat corect.
			Stabil	Portul corespunzător este conectat.
Porturile 1-16	Oprire	Lumina intermitență	Oprire	Nicio conexiune nu a fost stabilită.
			Lumina intermitență	Portul corespunzător este conectat și transferul de date este activ.

Conectarea S16 la Internet

Pentru montaj pe perete: Priza. Partea de jos a dispozitivului. Internet. Router. PC. Camera IP. Imprimanta.

Support

SHENZHEN TENDA TECHNOLOGY CO., LTD
Address: 8/F Floor, Tower E3, No.1001, Zhongguanyuan Road, Nanshan District, Shenzhen, China, 518052
Technical Support: support@tenda.com.cn
Skype: tendazh
Telephone: (86 755) 2765 7180

E-mail: sales@tenda.com.cn
Website: http://www.tenda.com
Skype: tendazh
YouTube: Tendazh1999

Türkçe

Ürün Genel Bakış

Portlar	Güç Girişi	LED	Durum	Tanım
LED ışıklar	Bağlantı Noktası	Açık	Açık	Güç kaynağı normaldir.
			Kapalı	Güç kaynağı normal değil.
			Sürekli Yanıyor	Yuvaya kablo bağlı olduğunu gösterir.
Bağlantı Noktası 1-16	Kapalı	Yanıp Sönüyor	Kapalı	Bağlantı olmadığını gösterir.
			Yanıp Sönüyor	Yuvaya kablolu bağlı ve data transferi olduğunu gösterir.

S16'ı internet'e bağlayın

Duvar montaj için: Çihazin altı. Adaptör girişi. İnternet. Yönlendirici. PC. IP Kamera. Yazıcı.

Destek

SHENZHEN TENDA TECHNOLOGY CO., LTD
Address: 8/F Floor, Tower E3, No.1001, Zhongguanyuan Road, Nanshan District, Shenzhen, China, 518052
Technical Support: support@tenda.com.cn
Skype: tendazh
Telephone: (86 755) 2765 7180

E-mail: sales@tenda.com.cn
Website: http://www.tenda.com
Skype: tendazh
YouTube: Tendazh1999

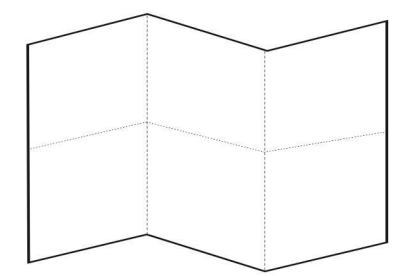
Safety and Emission Statement

CE Mark Warning: This is a Class A product. In a domestic environment, this product may cause radio interference, in which case the user may be required to take adequate measures. The manufacturer is not responsible for any radio or TV interference caused by unauthorized modifications to this equipment. (2) To avoid unnecessary radiation interference, it is recommended to use a shielded RJ45 cable.

RECYCLING: This product bears the recycling symbol for Waste Electrical and Electronic Equipment (WEEE). This means that the product must be handled pursuant to European directive 2012/19/EU in order to be recycled or disposed of in an environmentally friendly manner. Please refer to the instructions for disposal of this product for a complete recycling organization or to the retailer when he buys a new electrical or electronic equipment.

FCC Statement: This device complies with Part 15 of the FCC Rules. Operation is subject to the following two conditions: (1) This device may not cause harmful interference, and (2) this device must accept any interference received, including interference that may cause undesired operation. This equipment has been tested and found to comply with the limits for a Class B digital device, pursuant to Part 15 of the FCC Rules. These limits are designed to provide reasonable protection against harmful interference in a residential installation. This equipment generates, uses and can radiate radio frequency energy and, if not installed and used in accordance with the instructions, may cause harmful interference to radio communications. However, there is no guarantee that interference will not occur in a particular installation. If the equipment does cause harmful interference to radio or television reception, which can be determined by turning the equipment off and on, the user is encouraged to try to correct the interference by one of the following measures: — Reorient or relocate the receiving antenna. — Increase the separation between the equipment and receiver. — Connect the equipment into an outlet on a circuit different from that to which the receiver is connected. — Consult the dealer or an experienced radio/TV technician for help.

Specifications	S16
Standard	IEEE 802.3u/x
Interface	10/100/1000Mbps auto-negotiation RJ 45 ports (Auto MDI/MDX)
Transmission Media	10BASE-T, UTP category 3, 4, 5e and Better
Forwarding Rate	10Mbps / 100Mbps / 1000Mbps / 14880pps
LEDs	16*16/100Mbps Link/Act 1*power
Switching Capacity	3.2Dpps
Max Address Table	4K
Power Information	Input (100-200V~50/60Hz @ 0.3A) / Output (50V/1.0A)
Dimensions	118mm*120mm*42mm
Operating Environment	0°C~40°C
Storage Environment	Humidity 10%-90% non-condensing
Storage Environment	Temperature -40°C~70°C
Storage Environment	Humidity 5%-95% non-condensing



风琴折

平面设计图框

图框 比例 1:1 单位:mm

物料名称:	S16V1.0-TDE01全球化安装指南
物料编码:	10033150
适用机型:	S16V1.0-TDE01全球化安装指南
版本号:	

尺寸:	折后105*143mm
材料:	70g书写纸
印刷:	双面单黑
公差:	±1mm
工艺:	风琴折
耐破:	
打样数量:	4
其它	

设计:	
校对:	
批准:	
日期:	2017/03/26