



---

# HyperX Cloud Alpha Wireless



---

## Part Numbers

---

4P5D4AA

---



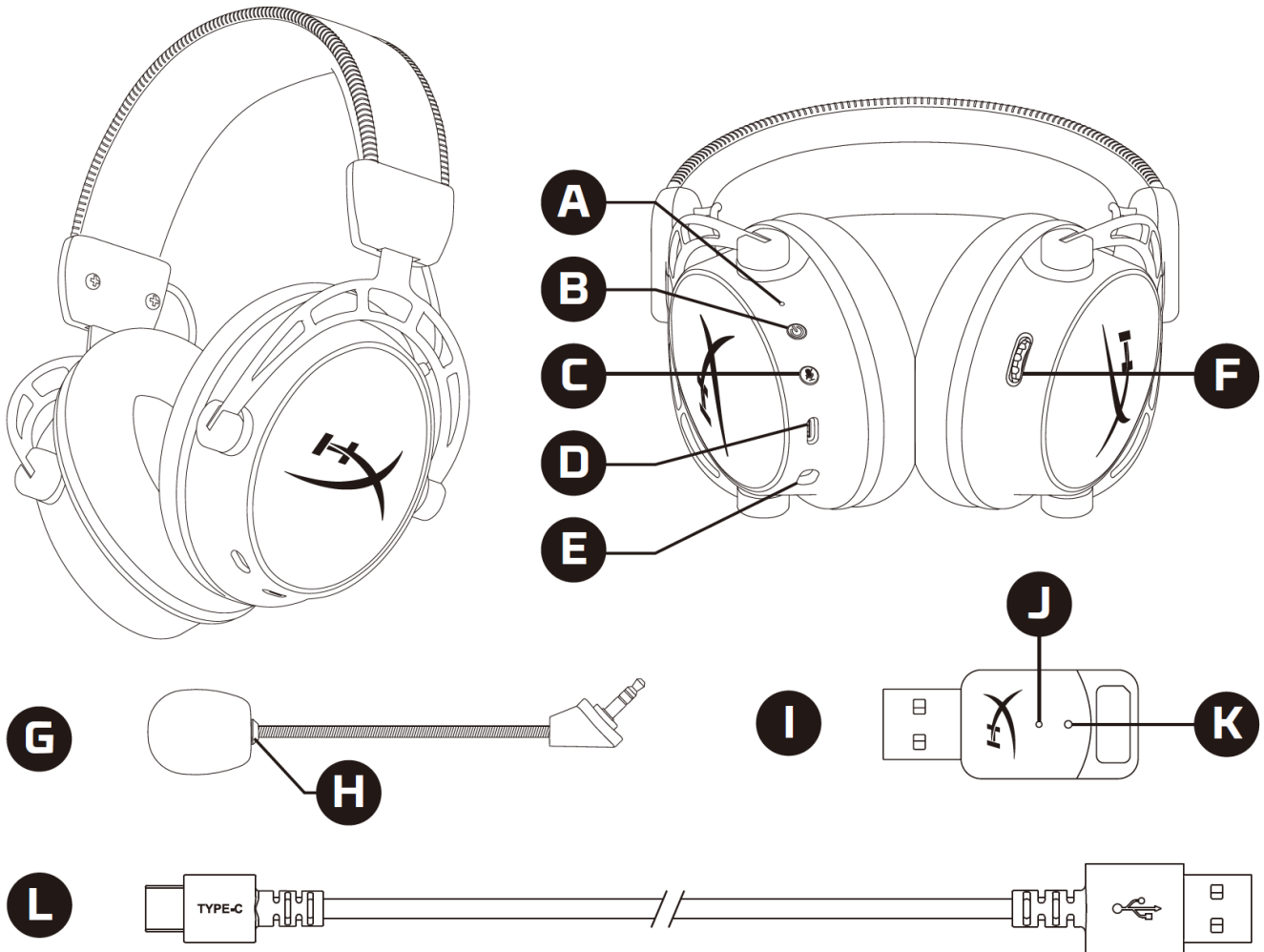
---

## TABLE OF CONTENTS

Overview .....	3
Specifications .....	4
Setting up with PC.....	6
Setting up with PlayStation 4 .....	9
Setting up with PlayStation 5 .....	10
Controls .....	12
Status LED.....	12
Power button.....	12
Mic mute / mic monitoring button .....	12
Volume wheel.....	13
Voice Prompt Notifications.....	13
Tone Notifications .....	14
Charging the Headset .....	15
Wired charging.....	15
HyperX NGENUITY Software .....	15
Manually Pairing the Headset and USB Adapter.....	16



## Overview



- |                                     |                              |
|-------------------------------------|------------------------------|
| A. Status LED                       | G. Detachable microphone     |
| B. Power button                     | H. Microphone mute LED       |
| C. Mic mute / mic monitoring button | I. USB adapter               |
| D. USB-C charge port                | J. Wireless status LED       |
| E. Microphone port                  | K. Wireless pairing pin hole |
| F. Volume wheel                     | L. USB charge cable          |



---

## Specifications

### Headphone

Driver: Dynamic, 50mm with neodymium magnets

Form factor: Over ear, circumaural, closed back

Frequency response: 15 Hz – 21 kHz

Impedance: 62  $\Omega$

Sensitivity: 103 dB SPL/mW at 1 kHz

T.H.D.:  $\leq 2\%$

Frame type: Aluminum

Ear cushions: Memory foam and premium leatherette

### Microphone

Element: Electret condenser microphone

Polar pattern: Bi-directional, Noise-cancelling

Frequency response: 50 Hz – 7.2 kHz

Sensitivity: -15 dBFS/Pa at 1 kHz

### Connections and Features

Audio connection: Wireless USB

USB audio format: Stereo

USB specification: USB 2.0

Sampling rates: 48 kHz

Bit-Depth: 24 bit

Included virtual surround sound: DTS Headphone:X

Audio controls: Onboard audio controls

### Battery

Type: Rechargeable lithium-polymer

Battery life: up to 300 hours\*

Charge time: 4.5 hours



---

## Wireless

Type: 2.4 GHz

Wireless range: Up to 20 meters\*\*

## Physical

Weight: 322g

Weight with microphone: 335g

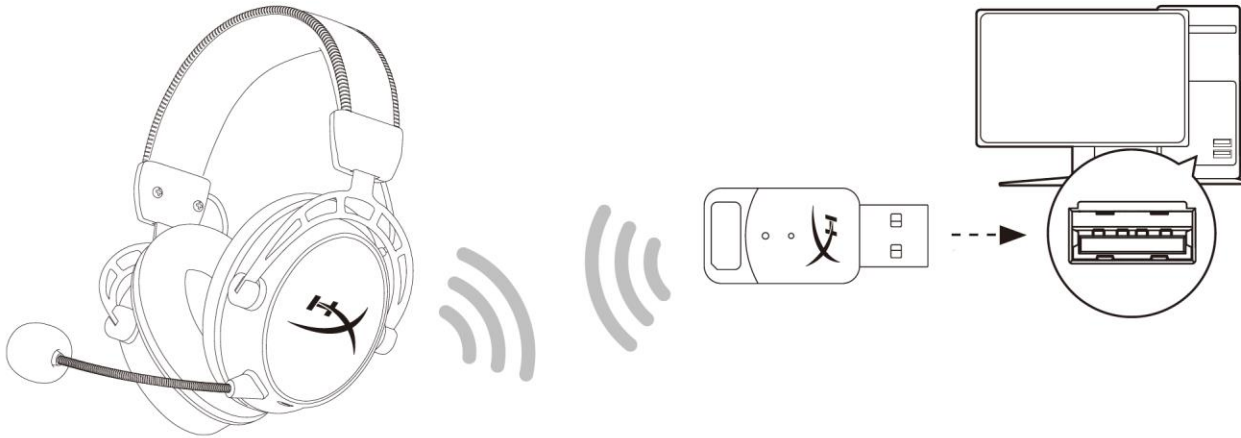
Cable length(s) and type(s): 0.5m USB charge cable

\*Tested at 50% headphone volume. Battery life varies depending upon the usage.

\*\*Wireless range may vary due to environmental conditions.



## Setting up with PC

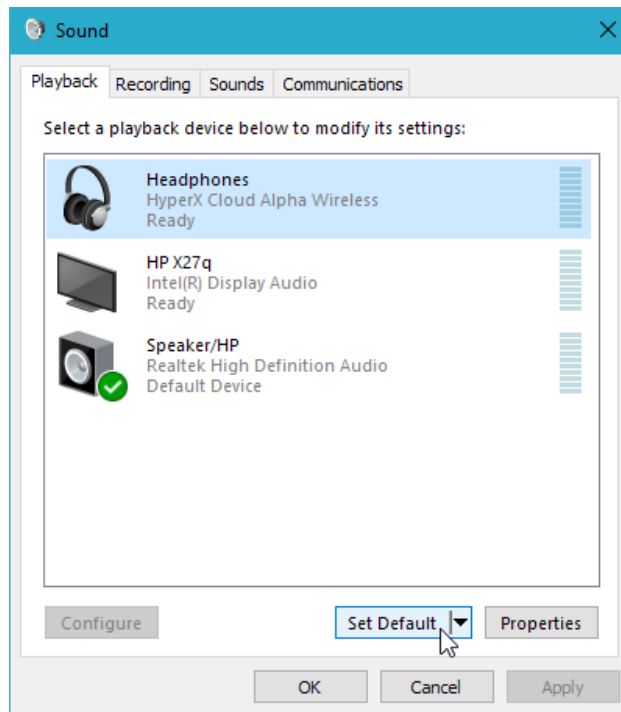


1. Connect the wireless USB adapter to the PC.
2. Power on the headset.
3. Right click *speaker icon* > Select *Open Sound settings* > Select *Sound Control Panel*

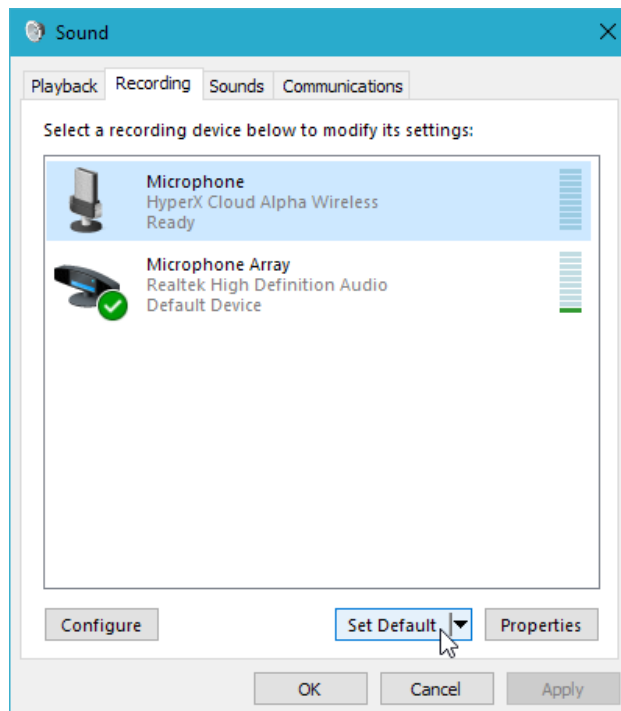
The image shows a sequence of steps for setting up the headset on a PC. It starts with a taskbar showing the speaker icon, which is right-clicked to open a context menu. The menu options are: 'Open Sound settings', 'Open Volume mixer', 'Spatial sound (Off)', and 'Troubleshoot sound problems'. The 'Open Sound settings' option is selected. This leads to the Windows Settings application, specifically the 'Sound' settings page. In the 'Related Settings' section on the right, the 'Sound Control Panel' link is highlighted with a mouse cursor.



4. Under the *Playback* tab, click on “**HyperX Cloud Alpha Wireless**” and click on the *Set Default* button.

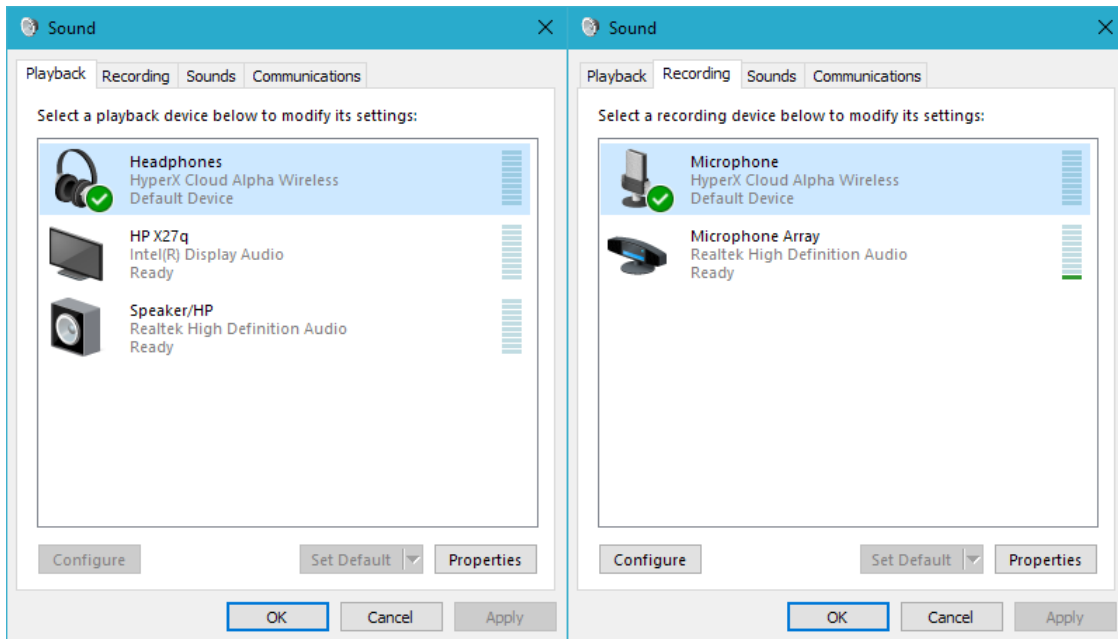


5. Under the *Recording* tab, click on “**HyperX Cloud Alpha Wireless**” and click on the *Set Default* button.





- Under the *Playback* tab, verify that “**HyperX Cloud Alpha Wireless**” is set as *Default Device* and *Default Communication Device*. Under the *Recording* tab, verify that “**HyperX Cloud Alpha Wireless**” is set as *Default Device*.

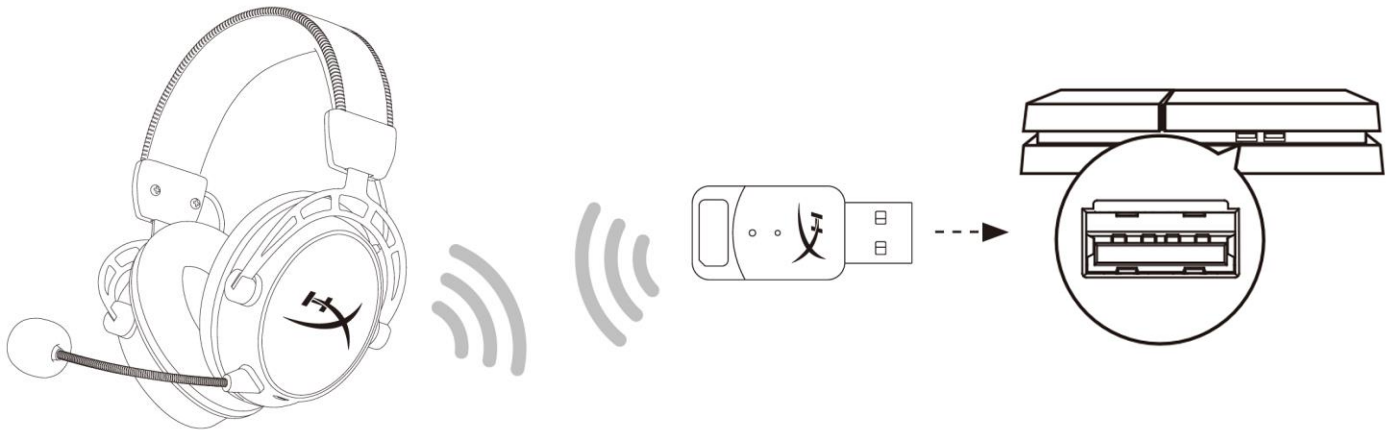


- To set up DTS Headphone:X, please download the HyperX NGENUITY software at [hyperxgaming.com/ngenuity](https://hyperxgaming.com/ngenuity) and follow the instructions in the app to install the required drivers. DTS Spatial Audio is controlled within NGENUITY software.

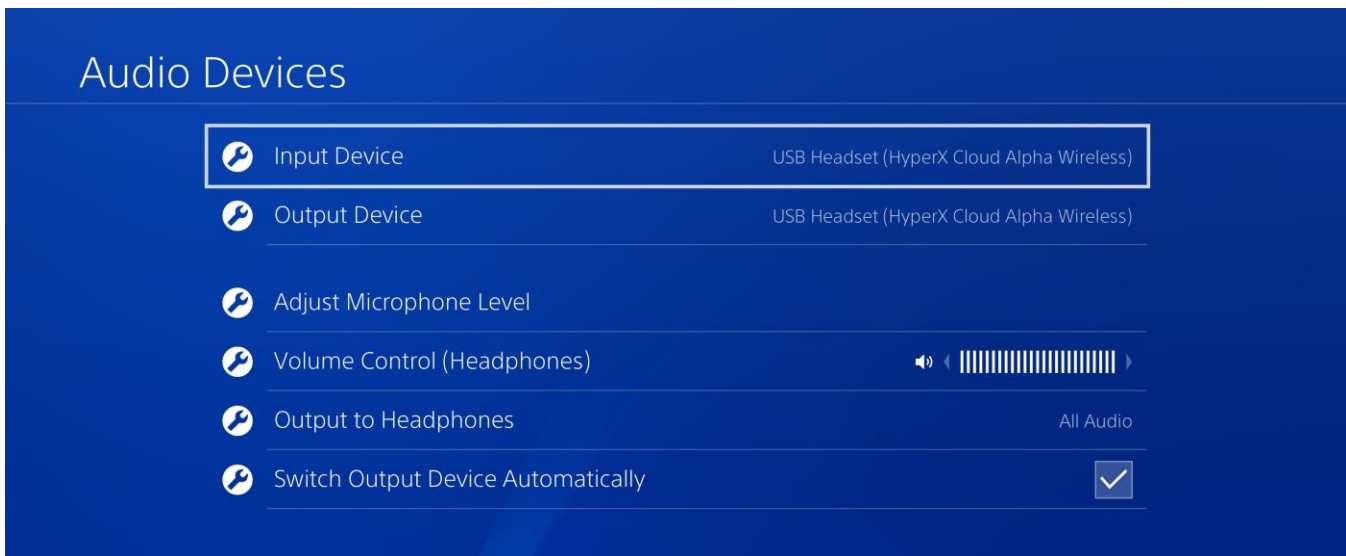




## Setting up with PlayStation 4



1. Connect the wireless USB adapter to the PlayStation 4 console.
2. Set *Input Device* to **USB Headset (HyperX Cloud Alpha Wireless)**
3. Set *Output Device* to **USB Headset (HyperX Cloud Alpha Wireless)**
4. Set *Output to Headphones* to **All Audio**
5. Set *Volume Control (Headphones)* to maximum.

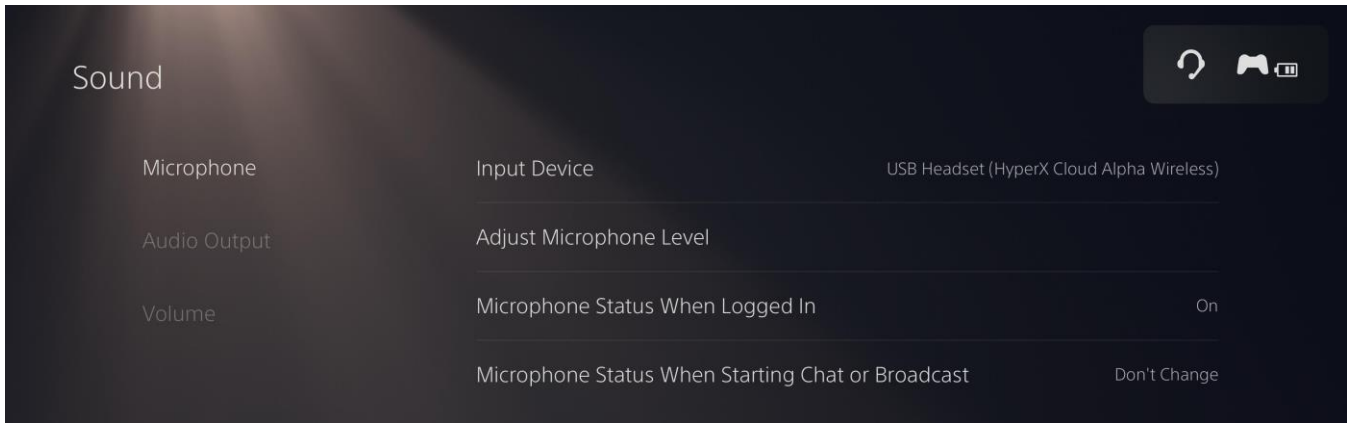




## Setting up with PlayStation 5



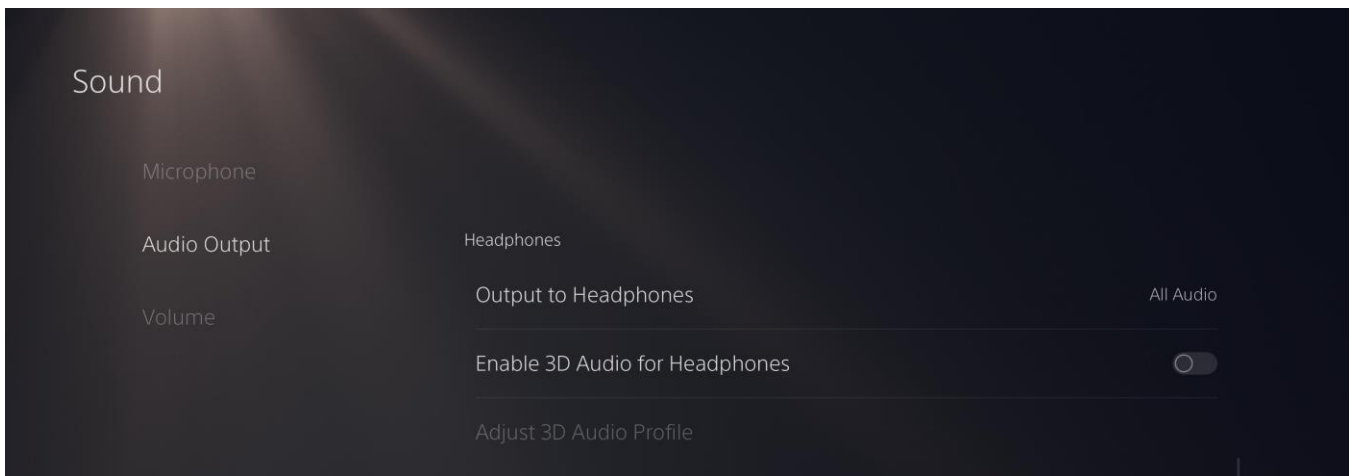
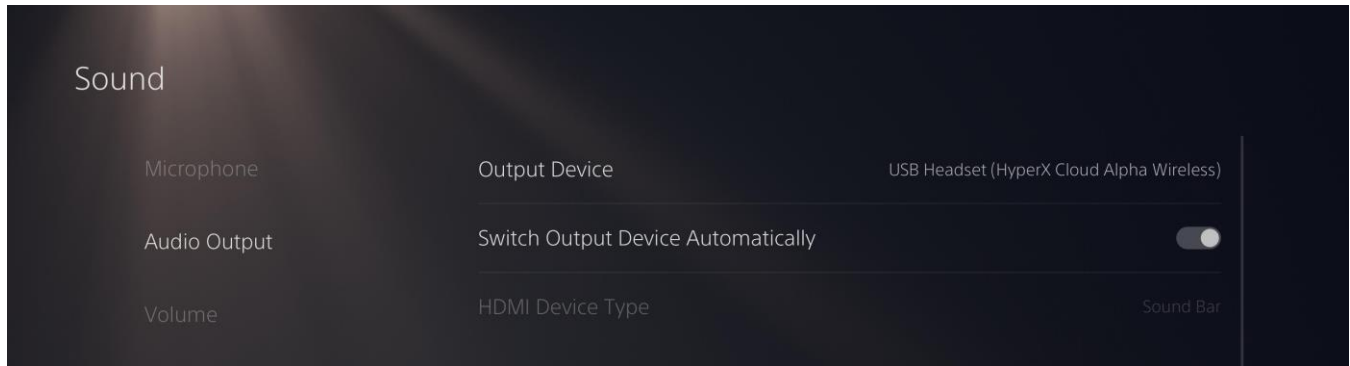
1. Connect the wireless USB adapter to the PlayStation 5 console.
2. Go to the home page and select Settings > Sound
3. Under *Microphone*, set the following:
  - Input Device to **USB Headset (HyperX Cloud Alpha Wireless)**



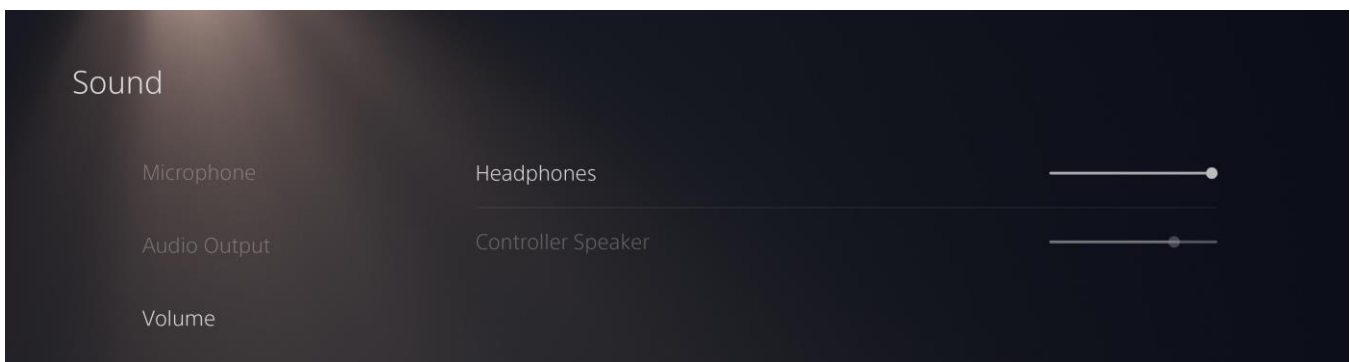


4. Under *Audio Output*, set the following:

- Output Device: **USB Headset (HyperX Cloud Alpha Wireless)**
- Output to Headphones: **All Audio**

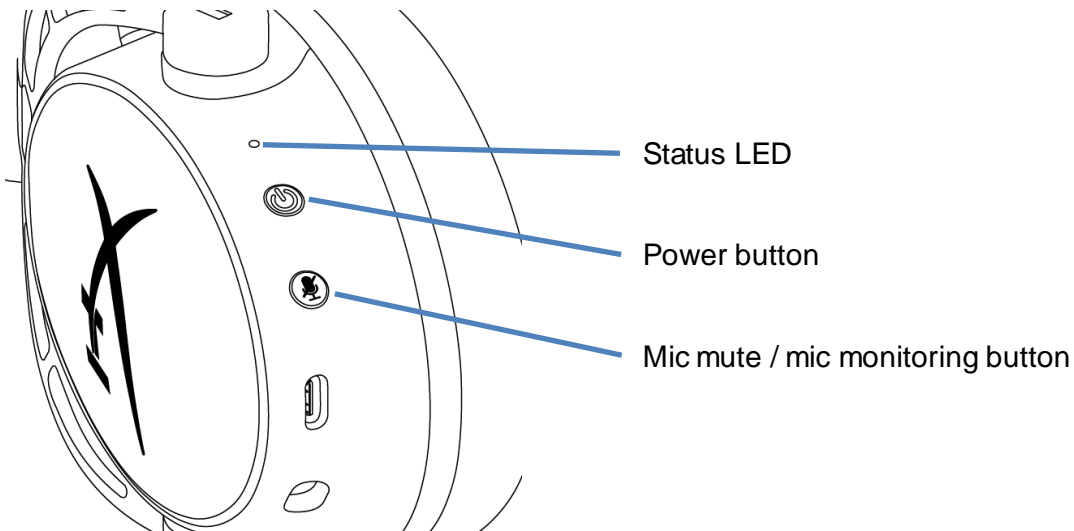


5. Under *Volume*, set Headphones slider to maximum level.





## Controls



### Status LED

Status	Battery Level	LED
<b>Searching</b>	-	Slow breathing green
<b>Connected*</b>	90% - 100%	Solid green for 5s
	10% - 90%	Blinking green for 10s
	< 10%	Blinking red for 10s

\*Battery level indication

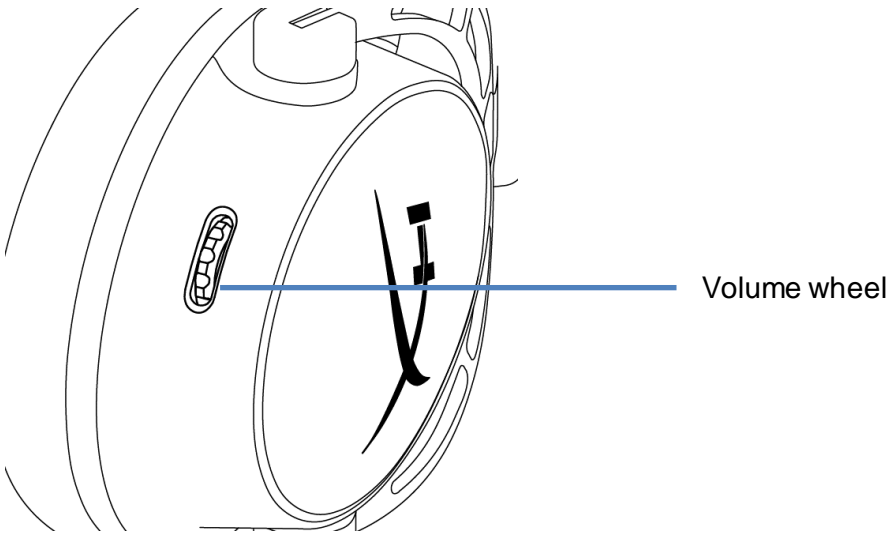
\*The status LED will automatically turn off to conserve battery life

### Power button

- Hold for 3 seconds to power headset on/off
- Press to hear battery level voice prompt

### Mic mute / mic monitoring button

- Press to toggle mic mute on/off
  - LED On – Mic muted
  - LED Off – Mic active
- Hold for 3 seconds to toggle mic monitoring on/off



**Volume wheel**

- Scroll up and down to adjust volume level

**WARNING:** Permanent hearing damage can occur if a headset is used at high volumes for extended periods of time

**Voice Prompt Notifications**

By default, the headset will emit voice prompts and tones to indicate the current headset status or behavior. See table below for details:

Headset status	Notification
Power On	“Power On”, “Battery level is ##%”
Power Off	“Power Off”
Connected to wireless USB adapter	“Connected”
Disconnected from wireless USB adapter	“Disconnected”
Battery level check	“Battery level is ##%”
Maximum volume reached	3 tones (high)
Minimum volume reached	3 tones (low)
Low battery (15%)	4 tones (mid, low, mid, low)
Microphone muted	2 tones (high, high)
Microphone active	1 tone (high)
Mic monitoring on/off	2 tones (mid, mid)



## Tone Notifications

In NGENUITY software, the headset voice prompt notifications can be disabled. When disabled, the headset will emit tones to indicate the current headset status or behavior. See table below for details:

Headset status	Tone Notification
Power On	1 tone (high)
Power Off	2 tones (high, low)
Maximum volume reached	3 tones (high)
Minimum volume reached	3 tones (low)
Low battery (15%)	4 tones (mid, low, mid, low)
Microphone muted	2 tones (high, high)
Microphone active	1 tone (high)
Mic monitoring on/off	2 tones (mid, mid)

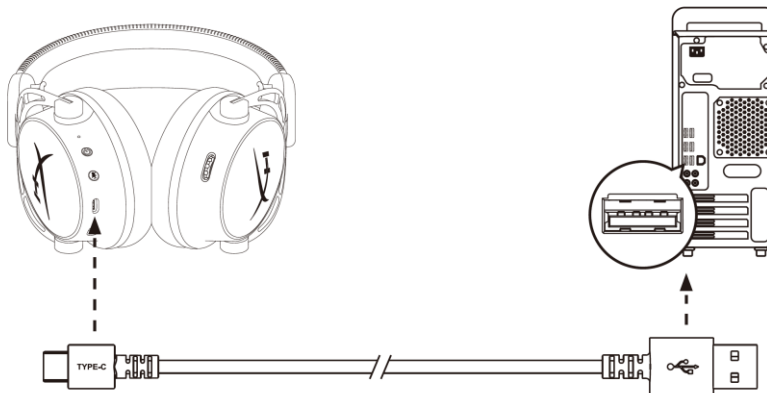
## Charging the Headset

It is recommended to fully charge your headset before first use.

When charging the headset, the headset status LED will indicate the current charge status.

Status LED	Charge Status
Solid green	Fully charged
Breathing green	10% - 99% battery level
Breathing red	< 10% battery level

### Wired charging



To charge the headset via wired, plug the headset to a USB port with the USB charge cable.

## HyperX NGENUITY Software

Go to [hyperxgaming.com/ngenuity](https://hyperxgaming.com/ngenuity) to download the NGENUITY software. Software features include:

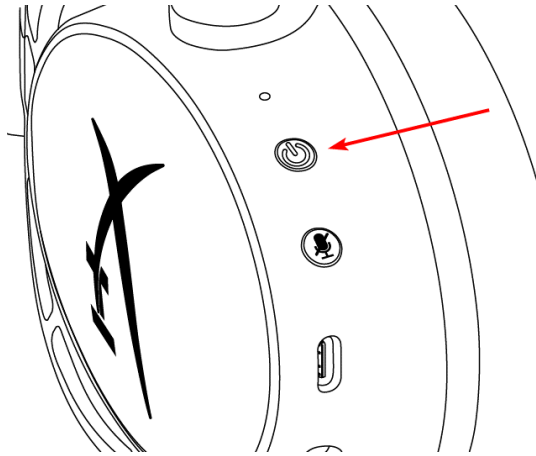
- DTS Headpone:X
- Adjustable EQ settings
- Adjustable auto shut-off behavior
- Battery level indicator



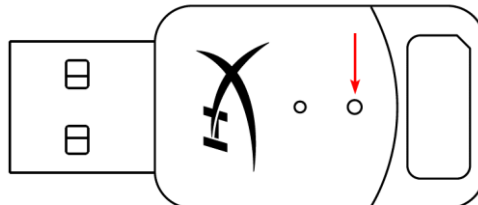
## Manually Pairing the Headset and USB Adapter

The headset and USB adapter are automatically paired together out of the box. But if manual pairing is needed, follow the steps below to pair the headset and USB adapter.

1. While the headset is powered off, hold down the power button until the headset status LED starts blinking red/green rapidly. The headset is now in pairing mode.



2. While the USB adapter is plugged in, use a small tool (e.g. paper clip, SIM tray ejector, etc.) to hold down the button inside the pin hole until the USB adapter LED starts blinking rapidly. The USB adapter is now in pairing mode.



3. Wait until both the headset LED and the USB adapter LED are solid.

The headset and USB adapter are now paired together.

## Questions or Setup Issues?

Contact the HyperX support team at: [hyperxgaming.com/support/](https://hyperxgaming.com/support/)